

Architectural Idea Book:

Buildings and Structures Coated with FEVE Resins



By
AGC

Architectural Projects



1 Aldar Headquarters



2 Olympia



3 Amazon Headquarters



4 Lyrik Back Bay



5 Nassau Veterans Memorial



6 Ferrari World Abu Dhabi



7 Skyline Plaza



8 Columbus Library



9 The Linx Office Complex



10 Amaffi House



11 Marina Bay Sands



12 Nicklaus Hospital



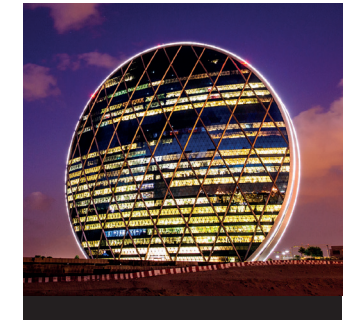
Aldar Headquarters

This 23-story corporate headquarters was the first circular building in the Middle East and was developed in line with the US Green Building Council LEED rating system. It is located in the Al Dana business district on the exclusive Al Raha Beach development in Abu Dhabi.

The building's shape symbolizes unity and stability and represents a fusion of tradition and innovation. The structure virtually eliminates the need for internal columns, which would detract from its aesthetic appeal and views.

Architects chose FEVE resins to protect the Aldar building from the region's extreme heat and high humidity levels. The ALPOLIC metal composite panels are coated with LUMIFLON FEVE resins to ensure ultra-durability in Abu Dhabi's severe conditions.

Project Name: Aldar Headquarters
Location: Al Raha beach, Abu Dhabi, UAE
Product: ALPOLIC from Mitsubishi Plastics and powder coating by Akzo Nobel Coatings
Architect: MZ Architects



Olympia

This striking 26-story mixed-use development in Brooklyn's DUMBO neighborhood was designed by Hill West Architects. Positioned near the Brooklyn Bridge, the tower stands out for its bold, twisting form and sail-like façade, which gives it a dynamic, sculptural presence on the skyline.

The design emphasizes movement and visual interest, with a curved exterior that shifts as viewers move around it. Combining residential space with ground-level uses, the project reflects the ongoing transformation of Brooklyn into a dense, design-forward urban environment.

Architects used IFS Powder Coatings' IFS 500FP for the exterior of the building, a LUMIFLON FEVE-based coating. Its high-performance exterior materials contribute to long-term durability and aesthetics as iconic addition to New York City's evolving cityscape.

Project Name: Olympia
Location: New York, New York
Product: IFS 500FP powder coatings
Architect: Hill West Architects

Photo courtesy of Michael Young



Amazon's Headquarters: The Spheres

Located in downtown Seattle, Amazon set a new standard for an environmentally friendly office space. Three sphere-shaped buildings were added to its headquarters that take architecture and horticulture to a whole new level.

Of the three, the largest sphere is approximately 90 feet tall and 130 feet in diameter. The entire structure is covered by 2,643 panes of clear glass shaped in a geometric pattern found in nature, known as a Catalan solid.

Mimicking a real tropical rainforest, inside temperatures during the day can rise to approximately 72 °F with 60% humidity, while at night, temperatures drop to 55 °F with 85% humidity. To combat condensation and corrosion caused by the exposure to these elements, the spheres' steel frames were coated with a LUMIFLON FEVE-based fluoropolymer resin.



Photo courtesy of Amazon

Project Name: **Amazon's Headquarters: The Spheres**
Location: **Seattle, WA, USA**
Product: **Tnemec's Fluoronar FEVE-based fluoropolymer**
Architect: **NNBJ**



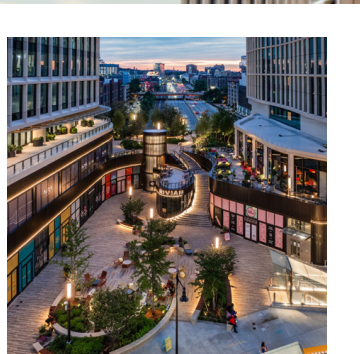
Lyrik Back Bay

Boston's Lyrik Back Bay is a landmark \$700 million mixed-use development that redefines urban connectivity by spanning the Massachusetts Turnpike and rail lines to link key neighborhoods. The project includes office and lab space, a hotel, retail, and a public plaza, all designed to meet high standards for durability and resilience.

A critical component of its performance is the use of LUMIFLON® FEVE-based coatings within a PPG Coraflon® powder system. These coatings provide exceptional weatherability, corrosion resistance, and long-term color stability, helping the façade withstand harsh New England conditions while maintaining its aesthetic appeal.

By combining innovative design with advanced coating technology, Lyrik Back Bay sets a new benchmark for sustainable, high-performance architectural development.

Project Name: Lyrik Back Bay
Location: Boston, Massachusetts
Product: PPG CORAFLO® powder system
Architect: Elkus Manfredi



Nassau Veterans Memorial Coliseum

The 45-year-old Nassau Veterans Memorial Coliseum – home of the New York Nets and Islanders - recently had a major overhaul to bring the arena into the 21st century. SHoP Architects transformed the plain concrete exterior with a futuristic metal structure.

The building is now enveloped in 225,000 square feet of 4-millimeter ALUCOBOND® Plus aluminum composite material. 4,700 fins are attached to the concrete exterior using prefabricated metal frames. The venue now has a futuristic look and received the Metal Construction Association's Chairman's Award for design excellence.

To protect the exterior façade, architects selected PPG's Durabrite clear coating with LUMIFLON FEVE resin technology. This resin technology preserves the aluminum fins and allows them to retain their beautiful color and gloss for years to come.

Project Name: New York's Nassau Veterans Memorial Coliseum
Location: Uniondale, NY, USA
Product: ALUCOBOND® PLUS aluminum composite material from 3A Composite USA
Architect: SHoP Architects & developer Forest City Ratner

**NY
CB** **LIVE**

JAY:Z
4:44

57491 00745 8
TOUR
12.2.17

In Show & Concert!
BOB DYLAN
& HIS BAND



NOV 8



**HOME OF
LONG ISLAND NETS**

NYCBLIVE.COM
f t i @nycblive

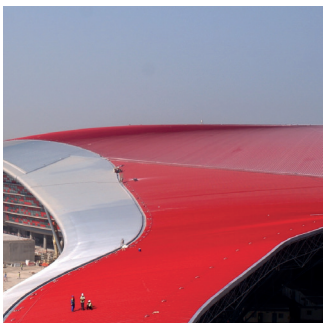


Ferrari World Abu Dhabi

Ferrari World Abu Dhabi, located on Yas Island, is the world's largest indoor theme park and home to the world's fastest roller coaster. The location, size and purpose of this leisure facility presented enormous design challenges. Designers wanted the overall structure to mimic the double curve side of a Ferrari GT body when viewed from the ground or the sky, with bright yellow and jet-black colors and a 32,000-square-foot Ferrari logo.

Architects selected a specially formu-lated LUMIFLON FEVE resin to coat the 200,000-square-foot roof. This coating provides the required UV resistance, high gloss and abrasion resistance to sand and the ability to protect and maintain its bright colors.

Project Name: **Ferrari World Abu Dhabi**
Location: **Abu Dhabi**
Product: **Beckers and Akzo Nobel**
Architect: **Benoy Architects**



Skyline Plaza

Project Name: **Skyline Plaza**
Location: **Frankfurt, Germany**
Product: **Monopol Colors AG**
Architect: **ECE Projektmanagement GmbH und Co. KG / Jourdan & Müller Projektgruppe Architektur und Städtebau**

The 400,000-square-foot Skyline Plaza shopping center in Frankfurt, Germany, won a golden certificate from the German Sustainable Building Council for its sustainable design and integration of the overall architecture in a urban environment. It has two levels of 170 stores, a wellness center, restaurants, catering businesses and a rooftop garden with great views of Frankfurt. The Plaza's central location connects Frankfurt's Messe trade center complex, banking district and city center.

The plaza is stunning to look at from the outside, with a vibrant façade of 59 different colors. Designers used LUMIFLON FEVE resins to protect the façade from the weather and the challenging urban environment.



Columbus Metropolitan Library

The renovation of the Karl Road Branch transforms a heavily used community hub into a modern, sustainable civic space. The two-level, 40,000-square-foot facility features expanded learning areas and flexible gathering spaces designed to support diverse community needs.

A key design element is its multi-material façade, combining black brick with woodgrain metal panels to create a warm, inviting exterior. Enhanced with LUMIFLON® FEVE-based coatings, the panels deliver exceptional weatherability, UV resistance and long-term durability.

By integrating advanced coating technology with sustainable design strategies, the project reduces lifecycle maintenance while maintaining visual appeal.

Project Name: Columbus Metropolitan Library
Location: Columbus, Ohio
Product: Pure + Freeform panels
Architect: Moody Nolan



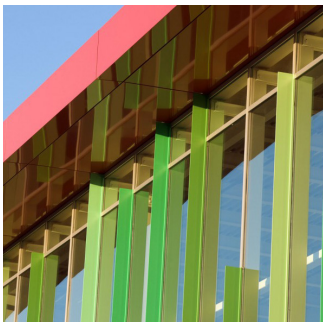
Photo courtesy of Cory Klein Photography

The Linx Office Complex

The Linx office complex was transformed from a warehouse, with its largely concrete exterior redesigned in glass and contemporary metal materials.

The external surface of the 185,000-square-foot, LEED Gold-certified building features ALUCOBOND® Spectra color-shifting aluminum composite material panels. This cladding is finished with a LUMIFLON FEVE fluoropolymer resin topcoat that helps maintain gloss and color while protecting against environmental stressors. LUMIFLON resins also significantly reduce maintenance life cycle costs because they uphold coating integrity for decades.

Project Name: The Linx Office Complex
Location: Watertown, Massachusetts
Product: Alucobond Spectra
Architect: Spagnolo, Gisness & Associates



Amaffi Perfume House Flagship

The luxurious storefront of Amaffi's U.S. flagship perfume boutique on Manhattan's "billionaires' row" features a custom brass aluminum cladding finish called Relic by Pure + Freeform. Relic uses technology that incorporates flecks of gold and aged brass to create an elegant appearance.

The topcoat of the panels is enriched with LUMIFLON FEVE fluoropolymer resin to provide unmatched weatherability and protection against coating degradation for decades. The LUMIFLON-based coating is VOC free and contributes to the project's LEED certification.

Project Name: **Amaffi Perfume House Flagship**
 Location: **New York, New York**
 Product: **Panels coated with LUMIFLON® resins**
 Architect: **TPG Architecture**



Marina Bay Sands

Marina Bay Sands is a 1-million-square-foot urban district along the Singapore waterfront. The area creates a gateway and provides a sophisticated public meeting place. The complex integrates the waterfront promenade, a multi-level retail arcade and the iconic ArtScience Museum on the promontory. Three 55-story hotel towers are connected at the top by a SkyPark, offering sweeping panoramic views of Singapore and housing a public observatory, gardens, a 150-meter (492-foot) infinity swimming pool, restaurants and jogging paths.

The hotel is coated with LUMIFLON FEVE resin to give a spectacular gloss finish on the white and metallic surface of the structure.

Project Name: Marina Bay Sands
Location: Marina Bay, Singapore
Product: ALPOLIC from Mitsubishi Plastics
Architect: Moshe Safdie Architects and Aedas



Nicklaus Children's Hospital

The Nicklaus Children's Hospital in Miami was recently remodeled with a fresh, bright, child-friendly color scheme. The building's concrete and fiberglass-reinforced panels are strong enough to withstand a Category 5 hurricane.

HKS Architects selected a high-performance, hyper-durable coating system to protect the panels and prevent the vibrant color hues from fading after years in the intense south Florida weather. Tnemec's Series 1070 Fluoronar formulated with LUMIFLON FEVE resins envelops the entire building, preventing coating degradation and ensuring color and gloss retention.

Project Name: Nicklaus Children's Hospital
Location: Miami, FL, USA
Product: Tnemec Company Series 1070 Fluoronar coating
Architect: HKS Architects

Photo courtesy of Geomantic





By
AGC

AGC Chemicals Americas, Inc.
55 E. Uwchlan Avenue, Suite 201
Exton, PA 19341
United States of America

Tel: +1 610-423-4300
Toll Free (US Only): 800-424-7833
Fax: +1 610-423-4305

www.lumiflonusa.com www.agcchem.com
Visit our website for compliance information and industry certifications.

LUMIFLON® is a registered trademark AGC Inc.
3/26

LUMIFLON® FEVE resins are used on some of the most remarkable structures in the world, even those that are located in severe environments.

Fluoropolymer resin-based coatings are highly durable with outstanding weatherability, so they last far longer than other coatings and reduce consumption of additional resources. Buildings and structures coated with FEVE-based resins maintain their bright, pristine appearance and look as good as new for decades. The unique resin technology efficiently protects against UV rays, oxidation, humidity, corrosion and acid rain.

FEVE-based coatings can be used on a variety of substrates and applied using different techniques, providing the highest quality for all building design elements such as coil coated aluminum panels, powder coated window frames and spray coated railings.

LUMIFLON FEVE resins are the first solvent-soluble fluoropolymer coating resins that are curable at room temperature and elevated temperatures. This makes them suitable for field application.

This Idea Book includes a variety of world-class structures to illustrate how FEVE resins can help a project realize its full potential in any location.