



product information

Fluon® Color Concentrate Pigment Dispersion *Technical Bulletin*

COLOR CONCENTRATES

AGC Chemicals Americas, Inc. produces color concentrates for colored injection molded parts, tubes, or colored wire insulation. The AGC product line includes color concentrates based on FEP, ETFE, PFA, PVDF, and ECTFE melt processable fluorinated copolymers with various flow rates for various processing and application needs.

The colors concentrates are supplied in cylindrical pellet form, approximately 0.125" long by 0.080" diameter.

PROCESSING

The products are added (approximately 1-4%) to natural fluoropolymer resins and processed using conventional thermoplastic techniques such as injection molding and melt extrusion.

SUPERIOR QUALITY

Color concentrates that are difficult to disperse can cause defects such as cone breaks, lumps, and spark-outs. Additionally, at low concentrate levels, color uniformity is difficult to achieve. Any significant color variation increases the variability of electrical properties.

AGC Chemicals Americas, Inc. developed a unique test method to evaluate color concentrate pigment uniformity and dispersion. This quality test allows AGC to produce color concentrates with superior color consistency which in turn provides the user with a more robust processing window.

COLORS AVAILABLE

White, Orange, Blue, Green, Brown, Red, Black, Yellow, Violet, and Gray; Custom colors available upon request. Please see contact information below.

Fluon® is a registered trademark of Asahi Glass Company, LTD.

The information provided herein is related only to the specific product designated and may not be applicable where such product is used in combination with any other materials or in any process. NO REPRESENTATION OR WARRANTIES, EITHER EXPRESSED OR IMPLIED, OF MERCHANTABILITY, FITNESS FOR A PARTICULAR PURPOSE OR OF ANY OTHER NATURE, ARE MADE HEREUNDER. The user of this product has the sole responsibility to determine the suitability of the product for any use and manner of use intended. This document may be revised after its issuance, and the user is advised to use the latest revision.



AGC Chemicals Americas, Inc.
Business & Technical Center
55 E. Uwchlan Ave., Suite 201
Exton, PA 19341
Phone: (610) 423-4000
Fax: (610).423-4301
www.agcchem.com

Fluon® Color Concentrate Pigment Dispersion *Technical Bulletin*

HAZARDOUS SUBSTANCES

Fluon® color concentrates do not contain lead, hexavalent chromium, or cadmium, and are used in applications where RoHS (Restrictions on the use of Certain Hazardous Substances) compliance is required.

HANDLING PRECAUTIONS

Heating Fluon® products in excess of 750°F (399°C) can produce toxic fumes. It is, therefore, necessary to provide local exhaust ventilation in areas where Fluon® products are exposed to high temperatures. Avoid breathing fumes or contaminating smoking tobacco with fumes, powder, or dust.

Thermal decomposition of this product will generate hydrogen fluoride, which is corrosive. Corrosion resistance materials are required for prolonged contact with molten resin.

SAFE HANDLING INFORMATION

A summary of the hazards, as defined by OSHA Hazard Communication Standard, 29 CFR 1910.1200 for this product are:

Physical hazards: None

Health hazards: None

FOR ADDITIONAL INFORMATION AND HANDLING INSTRUCTIONS READ AGC CHEMICALS AMERICAS, INC. MATERIAL SAFETY DATA SHEET.

For more information and samples contact

AGC Chemicals Americas, Inc.
55 E. Uwchlan Avenue, Suite 201
Exton, PA 19341

Phone: (800) 424-7833

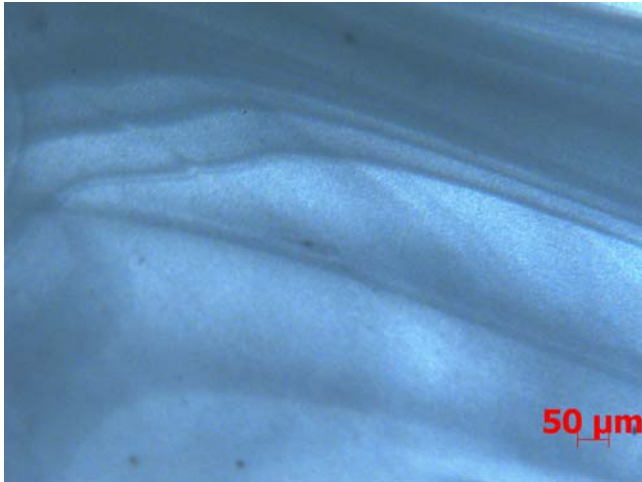
Fax: (610) 423-4301

Fluon® is a registered trademark of AGC Chemicals Americas, Inc.

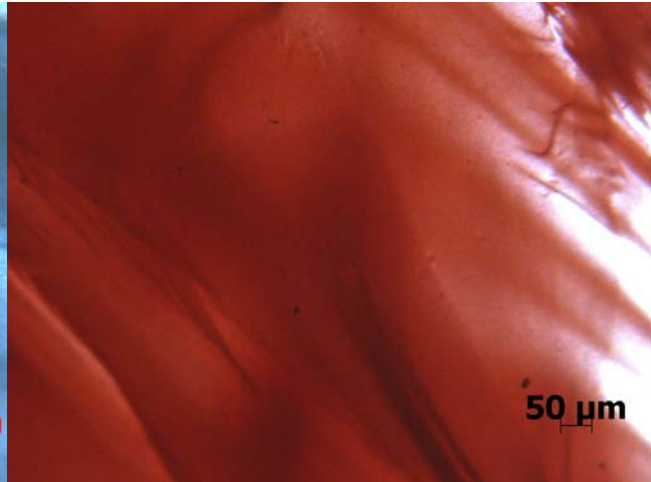
dispersion tech bulletin.DOC Rev. 12/2007

Fluon® Color Concentrate Pigment Dispersion *Technical Bulletin*

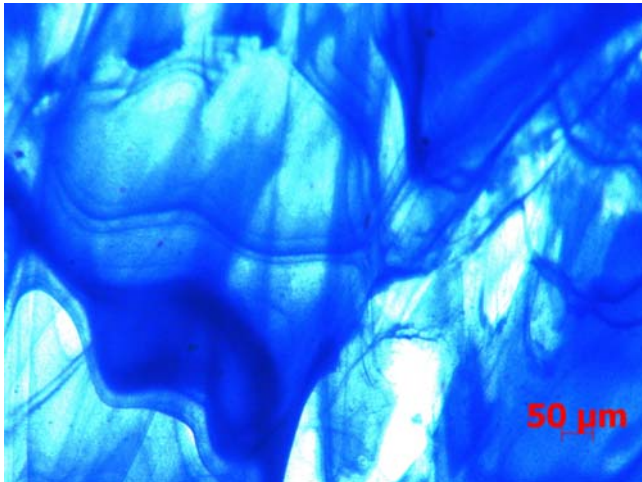
The following are examples of pigment dispersion using AGC Chemicals Americas' quality control method for the primary colors in the Fluon® FEP 9800 series product family. A 50-micron scale bar is provided for reference.



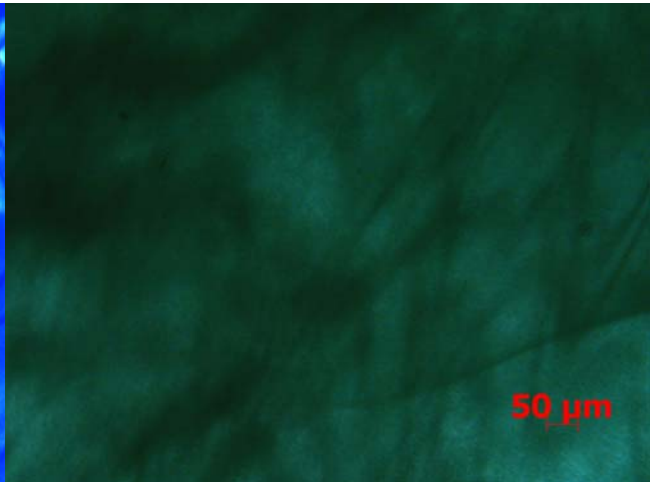
FEP WHITE 9800



FEP ORANGE 9800



FEP BLUE 9800



FEP GREEN 9800



FEP BROWN 9800